

**Arecont Vision Camera Installation Guide  
and Reference  
(AV2100, AV3100, AV3130)**

February 1, 2006

## Table of Contents

Table of Contents.....	2
Introduction .....	3
Technical Support.....	3
System Requirements .....	4
Dedicated PC .....	4
Network Switch or Router .....	4
Camera Location and Environment .....	5
Camera Mounting .....	5
Camera Power Supply .....	5
Camera Optics .....	5
Auto-Iris Lenses.....	5
Getting Started.....	6
Camera Installation .....	6
Software Installation .....	6
Configure Firewall .....	6
Find Cameras on the Network .....	8
Camera Reference.....	9
Introduction.....	9
Connectors .....	9
Power .....	9
Housing and Mounting .....	10
Network Cabling.....	10
Optics.....	10
Using a Manual Iris Lens .....	10
Using an Auto-Iris Lens .....	10
Day/Night Operation.....	11
Supported Network Services.....	11
Ping .....	11
ARP.....	11
TFTP .....	11
Troubleshooting and Useful Tips .....	12
Connecting Directly To Laptop or PC .....	12
Switches and Routers.....	12
Low Sharpness.....	12

## Introduction

Thank you for purchasing Arecont Vision mega-pixel IP video cameras. AV2100, AV3100 and AV3130 are state-of-the-art IP designed to deliver full motion high definition digital video across local area networks. Delivering over 40 Mpixels/sec of crystal-clear imagery, AV cameras represent a vastly superior alternative to low resolution analog and digital video. To accommodate this level of performance certain minimum system requirements have to be met. Please make sure to read this entire Manual and to follow installation instructions given below.

To resolve problems efficiently we recommend:

- Taking a picture of the scene in question, “Photo->Save”, and attaching it to the email
- Checking software and camera firmware version, “About”
- Execute “Settings->Dump” and attach file named LocalMachine.ini from the installation directory to the email
- Attach the file named lmlog.dat from the installation directory to the email

## System Requirements

### Dedicated PC

A dedicated PC is needed to receive image streams from cameras for archiving and display. The suggested minimum computer requirements are as follows.

- Standard Performance, 16-17 FPS (frames per second) of full-resolution video  
 CPU: 3.4 GHz  
 RAM: 512 MB  
 Video Card: 1600x1200, 64 MB RAM  
 Hard Disk  
     7 MB for application  
     Extra storage for image archives  
 Network card: 100 base-T
  
- High Performance, 24FPS at full resolution for AV2100  
 CPU: Dual 3.2 GHz  
 RAM: 512 MB  
 Video Card: 1600x1200, 64 MB RAM  
 Hard Disk:  
     7 MB for application  
     Extra storage for image archives  
 Network card: 100 base-T, 2 network cards – one for cameras and one for remote viewing

A PC with single, slower CPU is sufficient in the case when images are to be archived, but not displayed.

HDD size according to the desired capacity of the video archives (approximately 200Kbytes/image). As an example, two 400GB drives will yield approximately 6 days of archiving capacity for an 8-camera system recording at 1 frame per second

### Network Switch or Router

Using a 100 Mbps network switch or router is recommended. Simple hubs do not provide collision management and are not suitable for multi-camera AV system. Suggested models:

- Netgear ProSafe 8PT 100Base-TX Switch with POE #FS108PNA
- 10/100Base-TX w/4 POE 100Base-TX
- MSRP \$110 ([www.netgear.com](http://www.netgear.com))
  
- Netgear ProSave 16PT 100Base-TX Switch with PoE #FS116P
- 10/100Base-TX w/8 PoE 100Base-TX
- MSRP \$210 ([www.netgear.com](http://www.netgear.com))
  
- Netgear ProSafe 24+2 Gigabit Switch with POE
- 1 Gigabit output w/12 POE 100Base-TX
- MSRP \$380 ([www.netgear.com](http://www.netgear.com))
  
- D-Link Web Smart #DES-1316
- 10/100Base-TX w/8 POE ports and 8 non-POE ports
- MSRP \$388 ([www.compuplus.com](http://www.compuplus.com))
  
- TRENDnet #TPE-S88
- 10/100Base-TX w/8 POE ports and 8 non-POE ports , POE Single port hub
- MSRP \$250 ([www.provantage.com](http://www.provantage.com))

- PowerDsine #PD-3001/AC
- 10/100Base-TX
- Single Midspan POE port
- MSRP \$49 ([www.provantage.com](http://www.provantage.com))

## Camera Location and Environment

Outdoor installation requires an appropriate enclosure to protect the camera. Operating ambient temperature is 0°C to 50°C.

## Camera Mounting

Cameras are mounted using a ¼" x 20 threaded hole at the bottom of the housing. When mounting the camera make sure the screw that goes into the hole is short, ¼" or less, and does not touch the camera board.

The camera is to be installed according to the applicable code. The mounting means should be adequate for mounting a 1 lb camera plus the weight of the lens.

## Camera Power Supply

AV2100 and AV3100 cameras should be powered from 9V to 12V DC power source providing at least 4W per camera. AV3130 requires 5W. 12V – 1A is recommended. Alternatively, the cameras can be powered over Ethernet with 48V. A UL-approved isolated supply is required for use in the US. In the European Community the power supply must meet the requirements of the Low Voltage Directive and be CE marked.

## Camera Optics

A wide variety of C/CS mount ½" lenses may be used with AV cameras. Note that some CS lenses and all C-mount lenses may require an adaptor ring. Our lens suggestions include:

- Xavee L-04510MVF (4.5-10 mm), L-1040MVF-IR (10-40 mm)
- Tamron 12FM04T (4mm), 12FM06T (6mm), 12FM12T (12mm)
- Fujinon DF6HA-1B (6mm), HF9HA-1B (9mm), HF12.5SA-1 (12.5mm), CF12.5HA-1(12.5mm)
- Computar M0814-MP (8mm), M1214-MP (12mm), H3Z451CS (varifocal 4.5-12mm)

## Auto-Iris Lenses

Standard DC auto-iris lenses can be used with AV2100 and AV3100 cameras equipped with the auto-iris feature. Arecont Vision recommends high-resolution optics. Our suggestions for auto-iris lenses are:

- Xavee L-04510AVF (4.5-10 mm), L-1040AVF-IR (10-40 mm)
- Computar HG3Z4512FCS (varifocal 4.5-12mm)
- Tamron 12FG04T-SQ (4 mm), 12FG06T-SQ (6 mm) and 12FG12T-SQ(12mm)

## Getting Started

### Camera Installation

1. Attach optics and connect power supply to cameras
2. Connect network cables with RJ45 connector to the camera LAN port
3. Connect cameras to a dedicated 100 Mbps network switch. Connect the network switch to a computer network adaptor. Arecont Vision recommends that no more than 8 cameras should be connected to a single computer. Larger installations should use multiple 8-camera clusters. All clusters can then be accessed from a single computer using Remote Access feature described later in this manual
4. Optionally, for highest video rate performance, configure computer network adaptor for a HALF DUPLEX operation. For the best system performance use two network adapters: one for video traffic and one for the connection of the computer/server to LAN. It is also recommended that network adapter connected to the cameras be configured for a fixed IP address.
5. Check that the yellow LED on the back of the cameras is on. This LED indicates that a link to the router has been established. The green LED will blink when camera is accessed

### Software Installation

To install AV software:

1. Make sure your Windows XP/2K account has administrative privileges
2. Run setup.exe

Setup process installs software and places two shortcuts, “AV Camera Installer” and “AV Video System” on the desktop and in the Start menu.

### Configure Firewall

As you start AV applications, your PC may prompt you to permit access to the network. AV Video System includes two applications that need access to the network:

- AVInstaller.exe: the camera finding and installation program
- LocalMachine.exe: the viewing and archiving program

Both executables are located in the AV installation folder. You should grant access to these two applications when the firewall prompts you. For example:

- For Norton Internet Security choose “Permit Always” and click Ok, see Figure 1
- For McAfee Personal Firewall click “Grant Access”, see Figure 2.

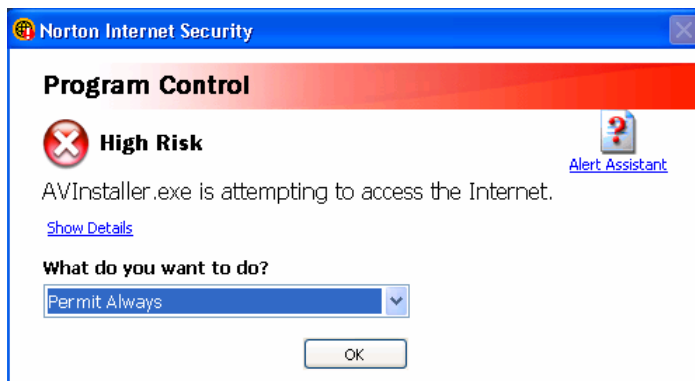


Figure 1. Open Norton Internet Security firewall for AV Camera Installer application

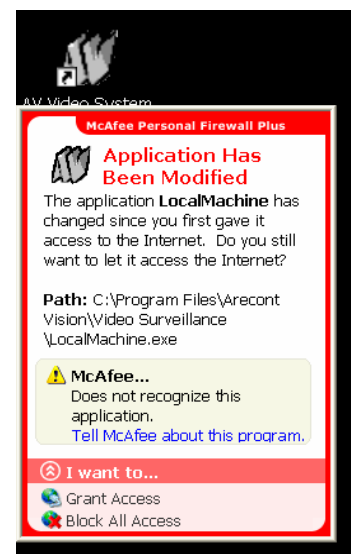
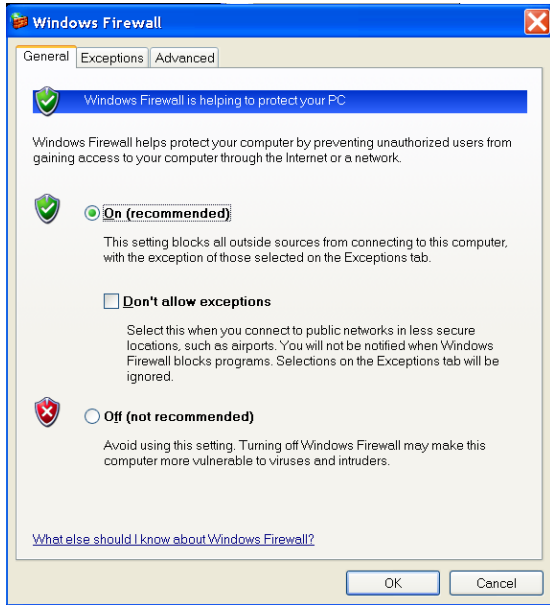


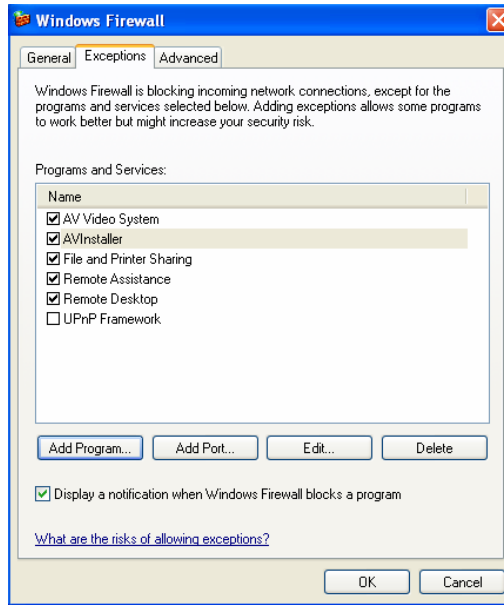
Figure 2. Open McAfee Personal Firewall for AV Video System application

If you are using Windows XP firewall, follow these instructions:

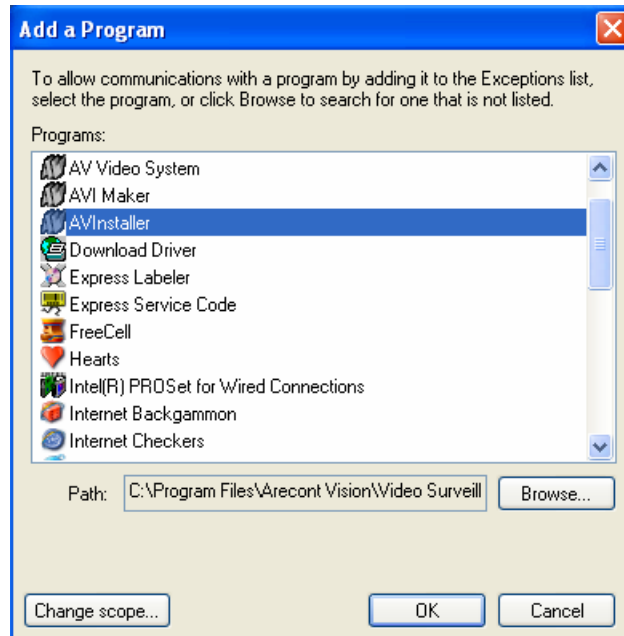
1. Click the Windows Start button and select "Control Panel"
2. From the "Control Panel" open "Windows Firewall"
3. "Windows Firewall" settings dialog will appear. If the firewall is "on", make sure "Don't allow exceptions" is unchecked, see Figure 3
4. Click "Exceptions" tab. Make sure "Local Machine" or "AV Video System" and "AVInstaller" appear in the list of programs and services and have a checkmark next to them, see Figure 4. If both these applications are not in the list, click "Add Program" button
5. Find "AVInstaller" in the list of programs and click "Ok". Repeat same for "AV Video System"
6. Click "Ok" to close the Windows Firewall dialog



**Figure 3. Windows firewall is enabled and exceptions are allowed**



**Figure 4. Verify "LocalMachine" or "AV Video System" and "AVInstaller" are in the list of exceptions**



**Figure 5. Add AVInstaller and AV Video System to the list of exceptions**

## **Find Cameras on the Network**

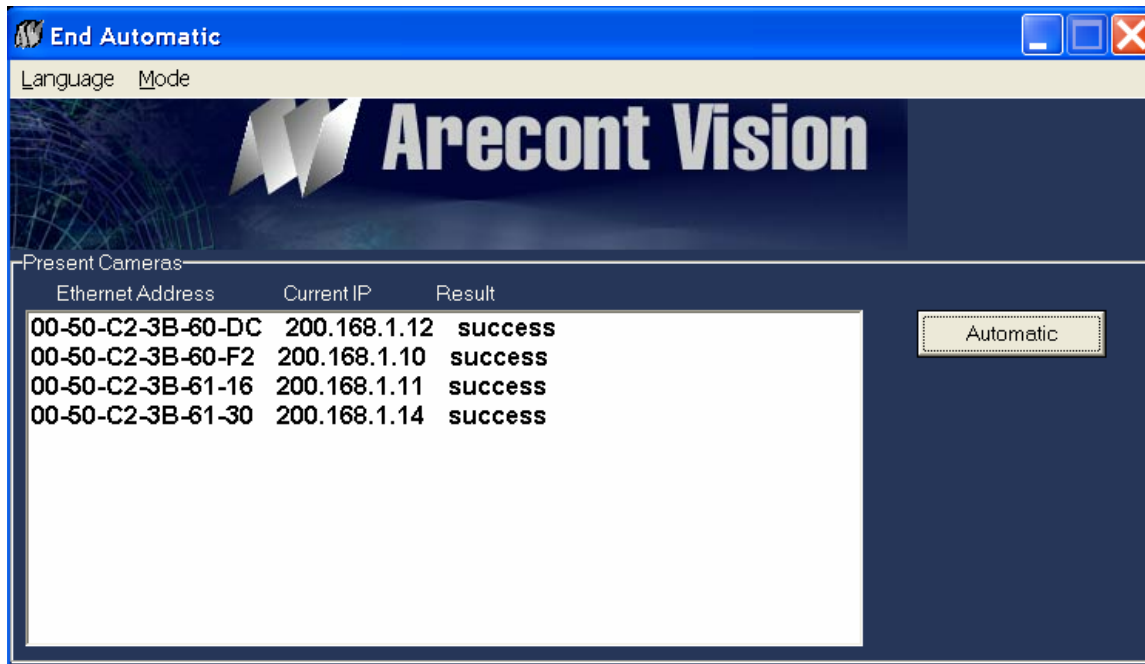
1. Start AVInstaller

AVInstaller can respond by requesting to close all applications that are currently receiving camera images. This indicates that AV Video System is already running. Go to the task bar, find the AV icon in the tray and click on it, see Figure 6. AV Video System will maximize to the entire screen. Right-click anywhere to bring the main pop-up menu and select “Exit”. AV Video System will terminate.



**Figure 6. AV Video System is running in the system tray. AV Video System must be terminated before installing cameras**

2. In AVInstaller window, press Automatic button (see Figure 7.). This will setup all connected and active cameras. Cameras will be assigned IP addresses from those that are currently un-assigned to other devices. Found and configured cameras will be displayed in the Present Cameras window
3. Press Alt-F4 to close the AVInstaller window. AVInstaller will prompt you to save information about detected cameras. Answer “Yes” to save the configuration



**Figure 7. Find cameras using AVInstaller**

## Camera Reference

### Introduction

AV2100, AV3100 and AV3130 are mega-pixel resolution IP cameras capable of delivering crisp, low-noise images at a video frame rate.

AV2100 is a 2-megapixel resolution camera having maximum resolution of 1600 by 1200 and achieving a maximum frame rate of 24.

AV3100 is a 3-megapixel resolution camera. Its maximum resolution is 2048 by 1536. AV3100 is typically viewed at 1920 by 1200 resolution with the frame rate up to 20 FPS.

AV3130 is a dual-sensor, day-night camera featuring a 3-megapixel color sensor paired with a 1.3-megapixel grayscale sensor. The 3-megapixel sensor has a maximum resolution of 2048 by 1536. The camera is typically viewed at a resolution of 1920 by 1200 with the maximum frame rate of 20 FPS. The 1.3-megapixel sensor has a resolution of 1280 by 1024. The color high-resolution sensor is used at times when illumination is plentiful, such as daytime. The lower resolution grayscale sensor is used at low illuminations, for example during night time. The sensor is sensitive to near infrared.

All cameras are equipped with LAN connector and can deliver image data at a maximum data rate of up to 45 Mbps. Images are sent over the network in a compressed Motion JPEG format using TFTP protocol.

All cameras feature:

- Automatic exposure
- Automatic multi-matrix white balance
- 50/60Hz flicker avoidance
- Programmable brightness, saturation, gamma, sharpness, windowing and decimation
- Simultaneous delivery of full-field view and zoomed images at video frame rate
- Instantaneous electronic zoom, pan and tilt
- Electronic image rotation by 180 degrees

### Connectors

AV2100, AV3100 and AV3130 have the following connectors on the back:

- LAN connector, accepting a network UTP or ScTP cable carrying 100 Base-T. The LAN connector also accepts power-over-Ethernet
- DC jack, accepting 9V-12V DC supply
- Optionally, a DC auto-iris connector. AV3130 does not support auto-iris and does not have this connector

### Power

Power for AV2100, AV3100 and AV3130 can be supplied as follows:

- Via DC jack, 9V-12V. A UL-certified, isolated power supply must be used. For power ratings see below. The center contact in the power connector is positive
- Via LAN connector, 48V DC over spare wires or over data pairs. The polarity is arbitrary. A list of recommended PoE switches includes
  - PowerDsine PD-6001/AC (PoE single port hub)
  - TRENDnet TPE-S88 (POE switch/hub with 8 POE ports and 8 non-POE ports)
  - D-Link Web Smart DES-1316 (POE switch/hub with 8 POE ports and 8 non-POE ports)

Power consumption is varies depending on mode of operation. The maximum power consumption takes place when the camera is polled at full frame rate and runs at full resolution. The consumption is approximately 4 Watts for AV2100 and AV3100 and 4.5 Watts for AV3130.

## Housing and Mounting

All camera models feature a durable aluminum housing that minimizes fire hazards. The housing is not hermetically sealed. The camera is not to be used outdoors without appropriate protective enclosures.

Cameras are mounted using a 1/4" x 20 threaded hole at the bottom of the housing. When mounting the camera make sure the screw that goes into the hole is short, 1/4" or less, and does not touch the camera board.

The camera is to be installed according to the applicable code. The mounting means should be adequate for mounting a 1 lb camera.

## Network Cabling

Category 5 cabling or better is recommended. All network cabling must be installed according to applicable codes and regulations by a licensed network cabling professional.

## Optics

AV2100 and AV3100 can be used with a manual or DC 1/2" auto-iris lens. AV3130 requires two manual iris lenses and has a limitation on lenses size. The lens mount can be C or CS with an appropriate adapter.

### ***Using a Manual Iris Lens***

Using a lens correctly is very important for mega-pixel cameras. The image may look blurry when the lens iris is fully open or closed too much. To deliver sharp mega-pixel resolution images you should

- a) use a mega-pixel-resolution lens
- b) obtain best resolution and depth of focus by having the iris slightly closed

You should use a manual iris lens whenever possible. When setting up the camera, direct the camera at the scene and try closing the iris in the manual lens by several F-stops. At some point you will see that the image looks sharpest. Leave the iris closed at this value.

### ***Using an Auto-Iris Lens***

AV2100 and AV3100 are available with DC auto-iris option. To use a DC auto-iris lens:

1. Attach it to the camera
2. Plug in the lens cable into the connector on the back of the camera. Make sure the lens cable is long enough. Many DC lenses are available with a short and long cable options.

The camera will automatically detect the presence of an auto-iris DC lens and start using it. Auto-iris lens operation typically proceeds as follows:

1. If illumination is sufficient, the camera will typically close the iris within half-a-minute
2. When the iris is closed, the image should become visibly sharper. As the iris is gradually closed the image may fluctuate slightly
3. The camera will use iris to control exposure

## Day/Night Operation

AV3130 is a camera designed for day and night operation. The camera has two sensors, a 3-megapixel color sensor and a 1.3-megapixel grayscale sensor which is sensitive to near infrared illumination. When the scene is well-illuminated the 3-megapixel sensor is selected to deliver color images of up to 2048x1536 in size. In dark conditions AV3130 can automatically switch to the grayscale sensor. Combined with an external near-infrared illuminator the camera can image under 0 Lux conditions.

See “AV Video Software Reference Manual” for details on configuring settings specific to AV3130.

## Supported Network Services

AV2100, AV3100 and AV3130 implements Ping, ARP and TFTP network protocols.

### ***Ping***

Ping protocol checks if the network device is on, available on the network and can successfully receive and transmit network packets. To ping a camera in Windows:

1. Open a command line interface window (click the “Start” button, choose “Run”, enter “cmd” and click enter)
2. For a camera with IP of 192.168.0.100 enter “ping 192.168.0.100”

### ***ARP***

ARP, the address resolution protocol, protocol provides means for translating IP addresses into MAC. It is used by network housekeeping software.

### ***TFTP***

The camera delivers images and is configured via TFTP, the trivial file transfer protocol.

## Troubleshooting and Useful Tips

### Connecting Directly To Laptop or PC

In a typical scenario cameras are connected using network cables to a network switch. A camera can also be connected to a PC or laptop directly. Be sure to use a cross-over network cable between the camera and PC when connecting in this fashion.

When a camera is connected directly, in some cases you may need to change TCP/IP configuration on your PC. For example, configure the PC to work with a static IP address.

When a PoE injector is used and connected directly to a PC there are two network cables. One cable connects the PC to the PoE injector. The other connects the injector to the camera. Only one of these cables must be cross-over. The other cable must be regular, not cross-over.

### Switches and Routers

Note that some Gigabit switches and network adapters incompletely emulate 100BaseT signaling levels and may not work correctly with high bandwidth 100BaseT equipment.

### Low Sharpness

If you believe image sharpness is low:

- Check if the lens is in focus
- Check if the lens provides sufficient resolution for a mega-pixel camera
- Increase compression ratio
- Check if the lens iris is fully open or closed down substantially. For best resolution and depth of field the iris – depending on lens make – should be closed by 2-3 F-stops